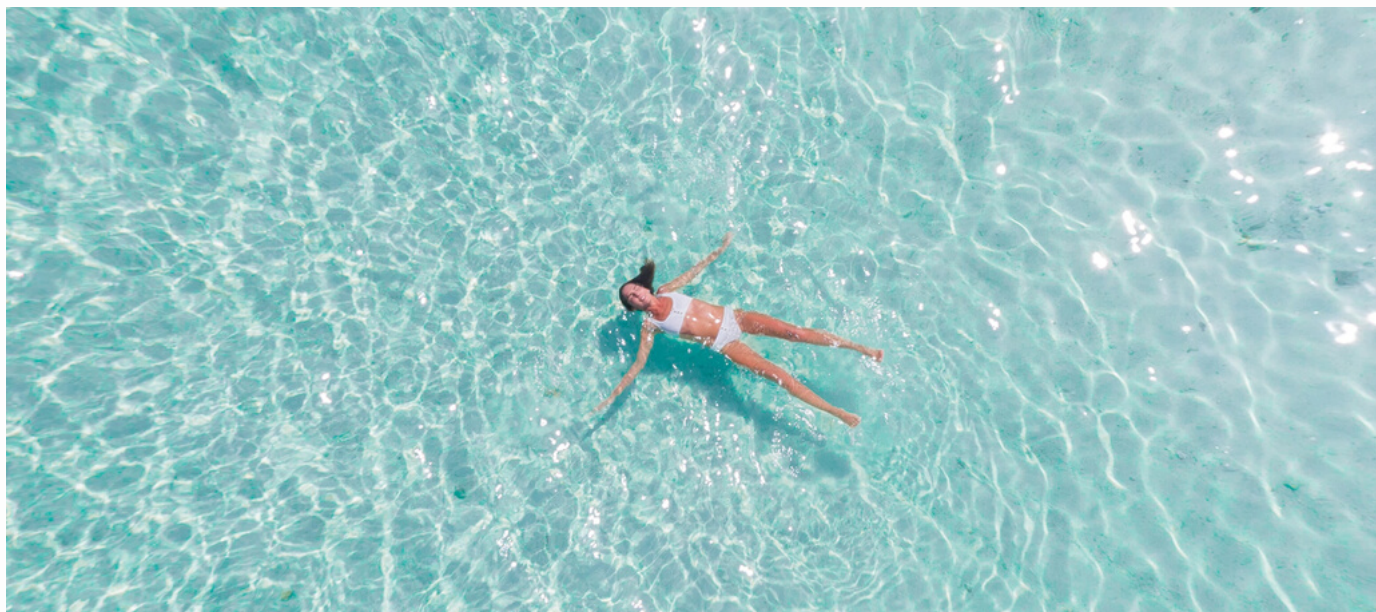


Color vibes

GLOBAL COLORS TRENDS SPRING/SUMMER 2020



COLOR PALETTES INSIDE
THE SEASON'S ISSUE:

BLOOMING TULIPS

FRUITY MEMORIES

LET SUMMER PLEASE YOU

COLORS IN CHEMISTRY

50 YEARS PLASTIKA KRITIS

Presented by



Summertime euphoria

A SEASON LINKED TO OPTIMISM

Studies indicate that there can be seasonal variations in our mood and a main suspect for depression is the lack of sunshine!

Happiness is actually linked to sunlight, as it naturally boosts serotonin, a neurotransmitter contributing to feelings of joy, making summer a natural "mood lift". By enjoying the sun we become physically healthier as well, receiving a dose of Vitamin D really essential to our health.

Finally, since summer approaches we get the chance to spend more time in nature. With so many options, from just sitting outside and enjoying the weather to hiking or snorkeling, everyone is closer to well being.

Blooming tulips

*IF ONLY SPRING COULD CHOOSE
ITS AMBASSADORS*



HARMONY



DEDICATION



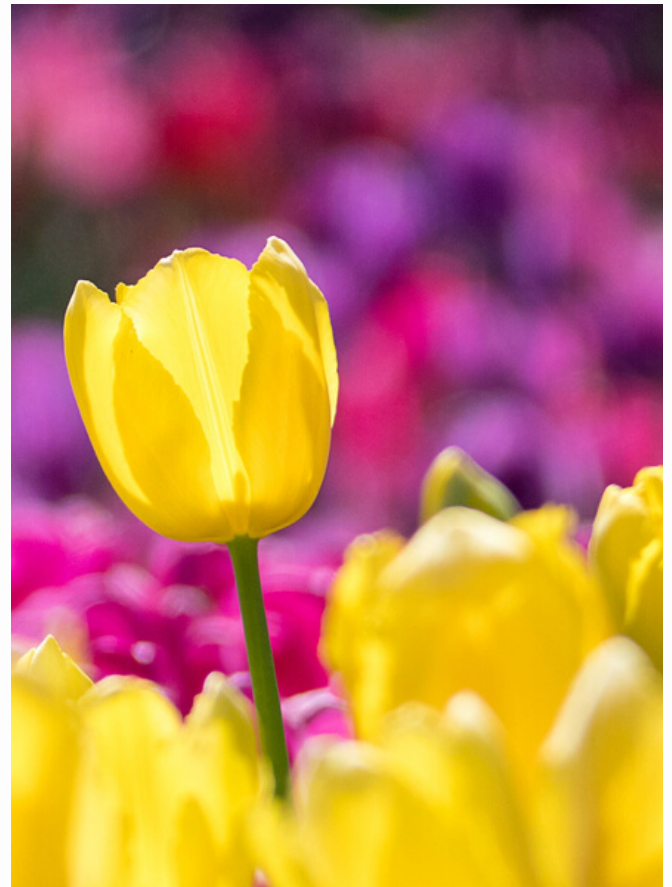
UNTOLD
FEELINGS



PERFECT
LOVE



FAITH

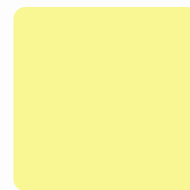


Fruity memories

*FRUITS THAT REVEAL THE TRUE
TASTE OF SUMMER*



PEACH



PINEAPPLE



MELON



WATERMELON



PRUNE

Let summer please you

FREEDOM, ADVENTURE AND JOY ARE FOUND IN THIS SEASON



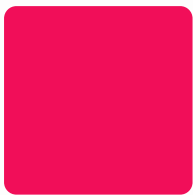
WAKING ON THE BEACH



EXPLORING NATURE



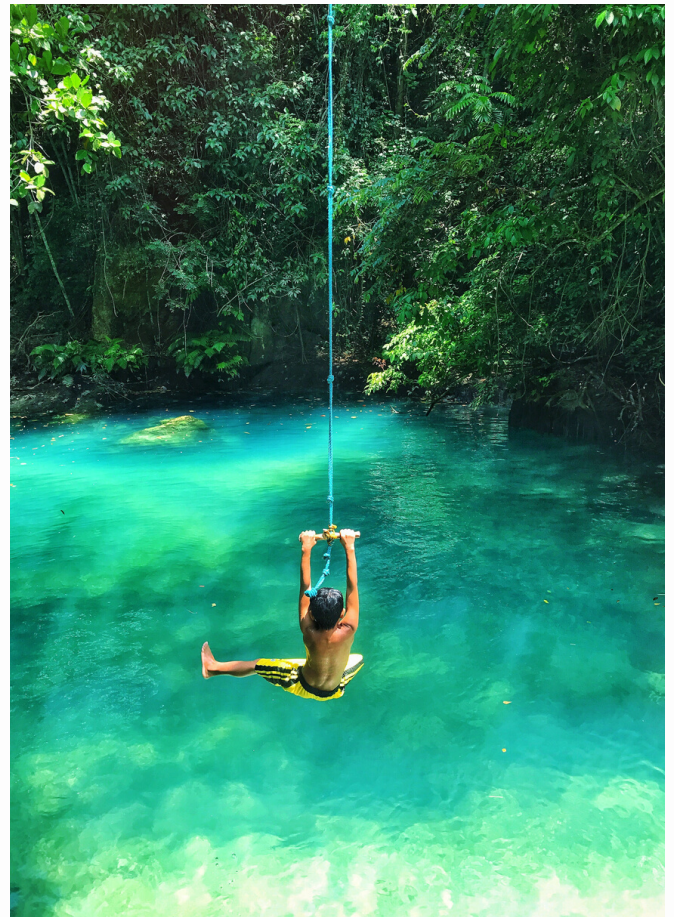
LAUGH WITH YOUR HEART



DANCING TILL DAWN

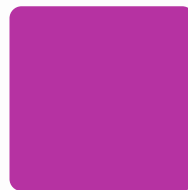


DIVING IN THE SEA

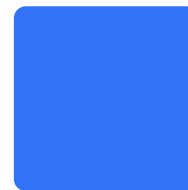


Colors in Chemistry

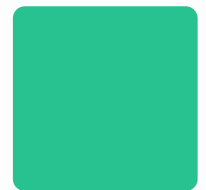
EXPERIMENTS CREATING ARTISTIC COLORS



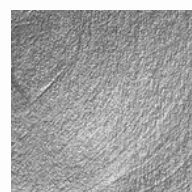
IODINE VAPORS



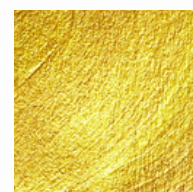
COBALT BLUE



OXIDIZED COPPER



SILVER



GOLD



50 YEARS PLASTIKA KRITIS

CELEBRATING THE ANNIVERSARY BY
PRESENTING FIRST-LAUNCHED
COLORS OF PLASTIKA KRITIS



RESPECT



PASSION FOR
PERFECTION



SOLIDARITY



TRUST



THRIVE



GLOBAL COLORS

offers these Color Vibes or any variations as masterbatches, suitable for a variety of applications (film, injection molding, blow molding, thermoforming, synthetic fibers, etc). Global Colors colorists can develop these shades in different polymer carriers, depending on end product requirements.